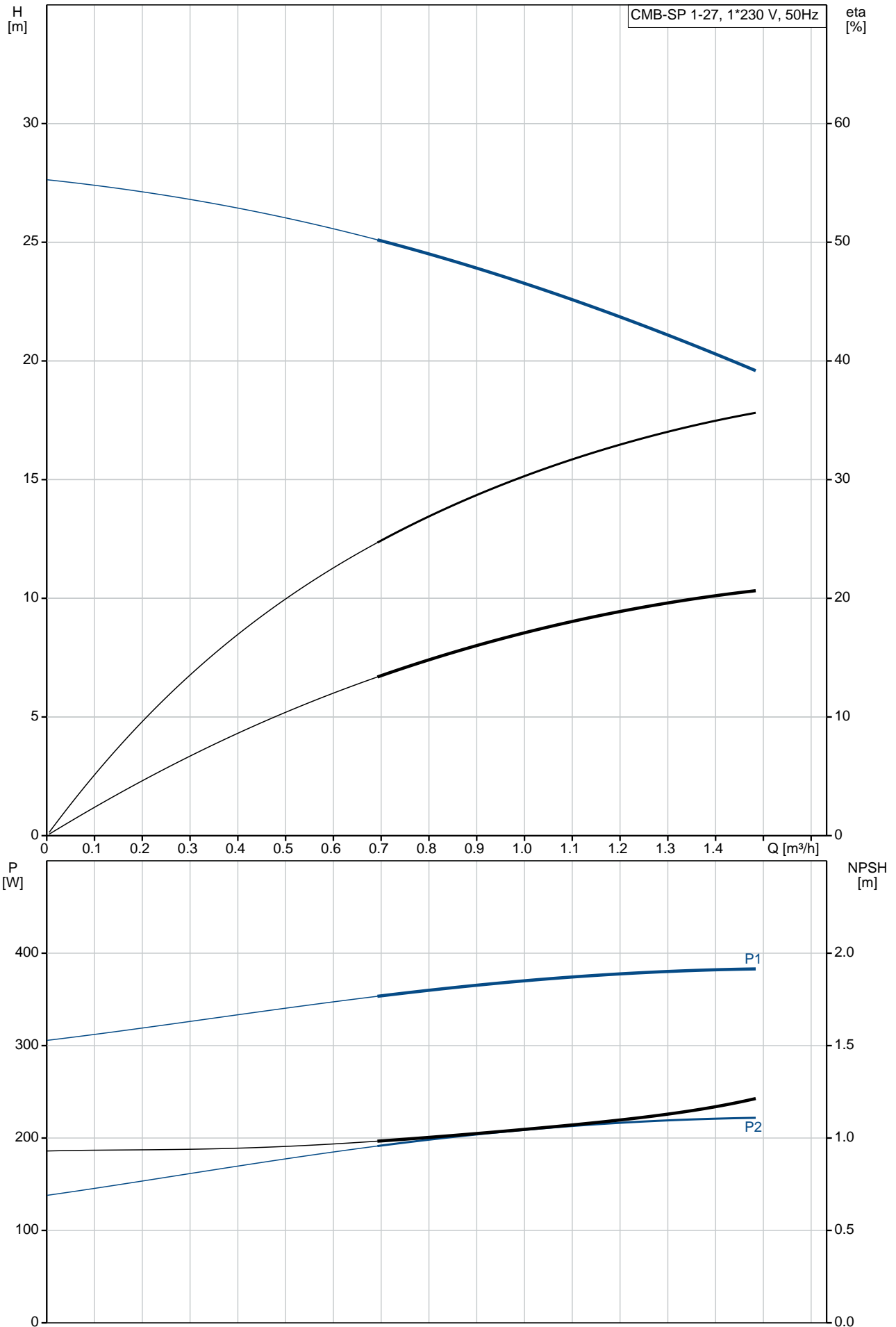


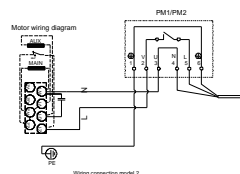
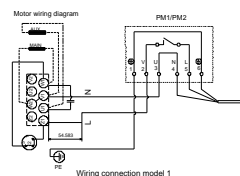
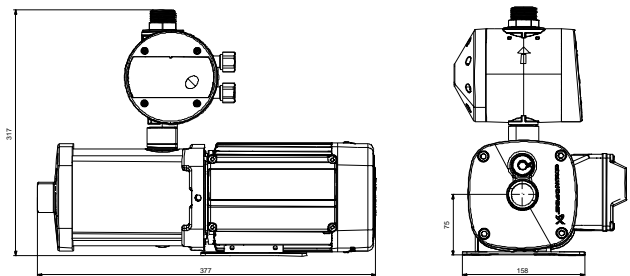
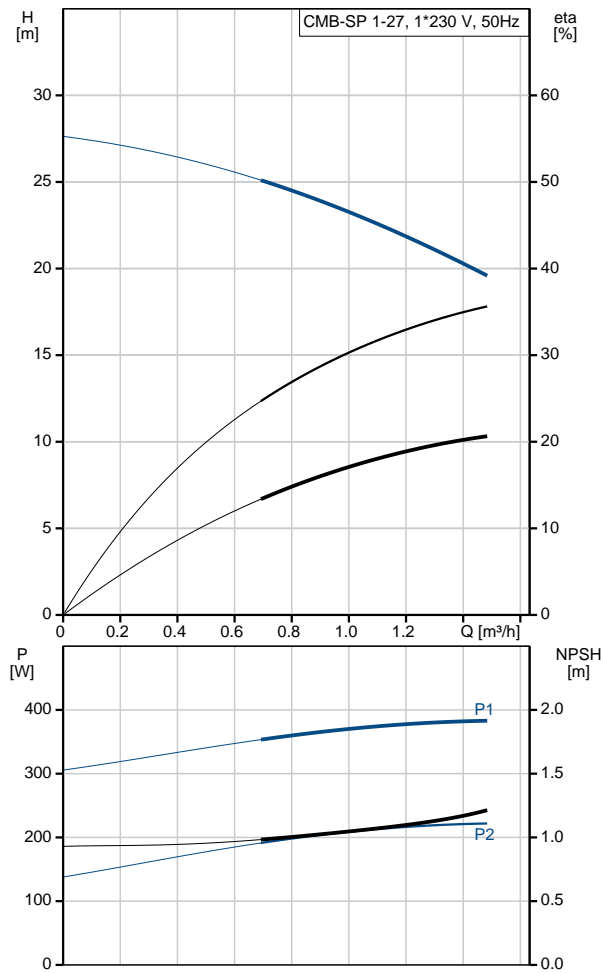
Position	Qty.	Description																												
	1	<p data-bbox="323 163 619 197"><b>CMB-SP 1-27 I-C-A-C-A-A</b></p> <div data-bbox="416 253 592 427" data-label="Image"> </div> <p data-bbox="323 483 600 517">Product No.: On request</p> <p data-bbox="323 544 1278 752">The Grundfos CM Booster self-priming pump with PM2 pressure manager is a compact booster solution for water supply in domestic applications. The pressure booster unit consists of a Grundfos CM self-priming pump and a Grundfos PM2 pressure manager. The pressure manager allows the pump to start and stop automatically according to demand and protects the pump from dry running.</p> <p data-bbox="323 752 1158 869">The CM Booster self-priming pump can create a suction lift of up to 8 m, and it is very easy to install. When the booster has been connected to the pipework, just plug it into a socket, and the system is operational.</p> <p data-bbox="323 931 421 958"><b>Features</b></p> <ul data-bbox="323 960 740 1167" style="list-style-type: none"> <li>• compact</li> <li>• easy installation</li> <li>• self-priming up to 8 m</li> <li>• automatic resetting of alarms</li> <li>• dry-running protection</li> <li>• anti-cycling (leakage detection)</li> <li>• maximum continuous operating time.</li> </ul> <p data-bbox="323 1229 456 1256"><b>Applications</b></p> <p data-bbox="323 1258 1295 1317">The Grundfos CM Booster self-priming pump with PM2 pressure manager is mainly used for domestic and light commercial water supply or booster systems.</p> <p data-bbox="323 1406 405 1433"><b>Liquid:</b></p> <table data-bbox="323 1435 815 1554"> <tr> <td>Pumped liquid:</td> <td>Water</td> </tr> <tr> <td>Liquid temperature range:</td> <td>0 .. 60 °C</td> </tr> <tr> <td>Liquid temperature during operation:</td> <td>20 °C</td> </tr> <tr> <td>Density:</td> <td>998.2 kg/m<sup>3</sup></td> </tr> </table> <p data-bbox="323 1585 443 1612"><b>Technical:</b></p> <table data-bbox="323 1615 882 1821"> <tr> <td>Rated flow:</td> <td>1.2 m<sup>3</sup>/h</td> </tr> <tr> <td>Rated head:</td> <td>22.4 m</td> </tr> <tr> <td>Primary shaft seal:</td> <td>AVBE</td> </tr> <tr> <td>Approvals and markings:</td> <td>CE</td> </tr> <tr> <td>Curve tolerance:</td> <td>ISO9906:2012 3B</td> </tr> <tr> <td>Self-priming:</td> <td>4 m</td> </tr> <tr> <td>Start pressure:</td> <td>PM1 - 1.5 bar</td> </tr> </table> <p data-bbox="323 1852 437 1879"><b>Materials:</b></p> <table data-bbox="323 1881 887 2087"> <tr> <td>Pump housing:</td> <td>Stainless steel DIN W.-Nr. 1.4301 AISI 304</td> </tr> <tr> <td>Impeller:</td> <td>Stainless steel DIN W.-Nr. 1.4301 AISI 304</td> </tr> <tr> <td>Rubber:</td> <td>EPDM</td> </tr> </table>	Pumped liquid:	Water	Liquid temperature range:	0 .. 60 °C	Liquid temperature during operation:	20 °C	Density:	998.2 kg/m <sup>3</sup>	Rated flow:	1.2 m <sup>3</sup> /h	Rated head:	22.4 m	Primary shaft seal:	AVBE	Approvals and markings:	CE	Curve tolerance:	ISO9906:2012 3B	Self-priming:	4 m	Start pressure:	PM1 - 1.5 bar	Pump housing:	Stainless steel DIN W.-Nr. 1.4301 AISI 304	Impeller:	Stainless steel DIN W.-Nr. 1.4301 AISI 304	Rubber:	EPDM
Pumped liquid:	Water																													
Liquid temperature range:	0 .. 60 °C																													
Liquid temperature during operation:	20 °C																													
Density:	998.2 kg/m <sup>3</sup>																													
Rated flow:	1.2 m <sup>3</sup> /h																													
Rated head:	22.4 m																													
Primary shaft seal:	AVBE																													
Approvals and markings:	CE																													
Curve tolerance:	ISO9906:2012 3B																													
Self-priming:	4 m																													
Start pressure:	PM1 - 1.5 bar																													
Pump housing:	Stainless steel DIN W.-Nr. 1.4301 AISI 304																													
Impeller:	Stainless steel DIN W.-Nr. 1.4301 AISI 304																													
Rubber:	EPDM																													

Position	Qty.	Description
		<p><b>Installation:</b>  Maximum ambient temperature: 55 °C  Flange standard: WHITWORTH THREAD RP</p> <p><b>Electrical data:</b>  Rated power - P2: 0.3 kW  Mains frequency: 50 Hz  Rated voltage: 1 x 220-240 V  Maximum current consumption: 1.8-2.4 A  Rated speed: 2800-2830 rpm  Enclosure class (IEC 34-5): IP55  Insulation class (IEC 85): F  Type of cable plug: SCHUKO  Mains cable: 1.5 m</p> <p><b>Others:</b>  Net weight: 13.1 kg  Gross weight: 21.1 kg</p>

# On request CMB-SP 1-27 I-C-A-C-A-A 50 Hz



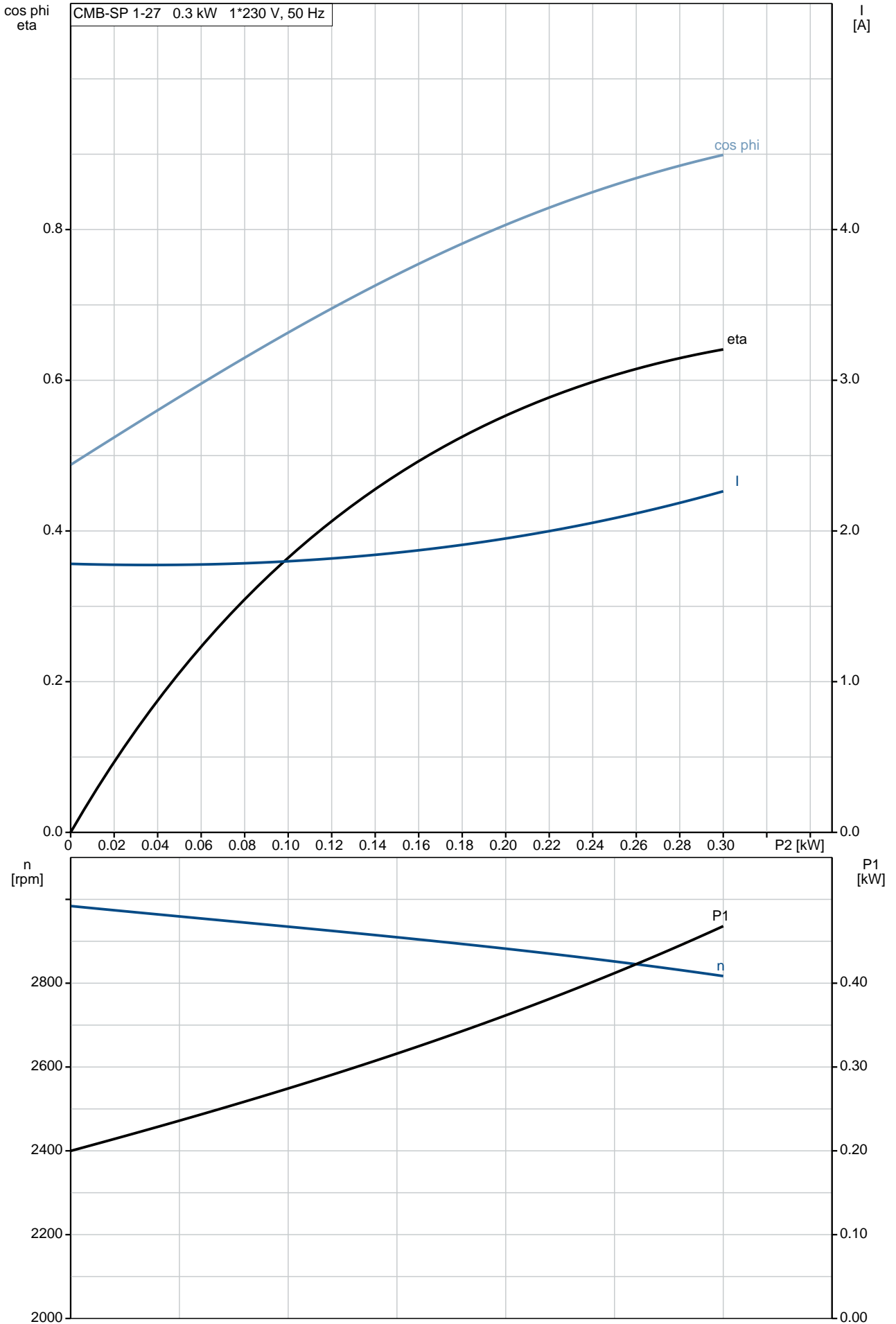
Description	Value
<b>General information:</b>	
Product name:	CMB-SP 1-27 I-C-A-C-A-A
Product No:	On request
EAN number:	On request
<b>Technical:</b>	
Rated flow:	1.2 m <sup>3</sup> /h
Rated head:	22.4 m
Impellers:	3
Primary shaft seal:	AVBE
Approvals and markings:	CE
Curve tolerance:	ISO9906:2012 3B
Model:	A
Self-priming:	4 m
Start pressure:	PM1 - 1.5 bar
<b>Materials:</b>	
Pump housing:	Stainless steel DIN W.-Nr. 1.4301 AISI 304
Impeller:	Stainless steel DIN W.-Nr. 1.4301 AISI 304
Rubber:	EPDM
<b>Installation:</b>	
Maximum ambient temperature:	55 °C
Flange standard:	WHITWORTH THREAD RP
<b>Liquid:</b>	
Pumped liquid:	Water
Liquid temperature range:	0 .. 60 °C
Liquid temperature during operation:	20 °C
Density:	998.2 kg/m <sup>3</sup>
<b>Electrical data:</b>	
Rated power - P2:	0.3 kW
Mains frequency:	50 Hz
Rated voltage:	1 x 220-240 V
Maximum current consumption:	1.8-2.4 A
p max system:	10 bar
Rated speed:	2800-2830 rpm
Enclosure class (IEC 34-5):	IP55
Insulation class (IEC 85):	F
Motor protec:	TP 211
Type of cable plug:	SCHUKO
Mains cable:	1.5 m
<b>Others:</b>	
Net weight:	13.1 kg
Gross weight:	21.1 kg



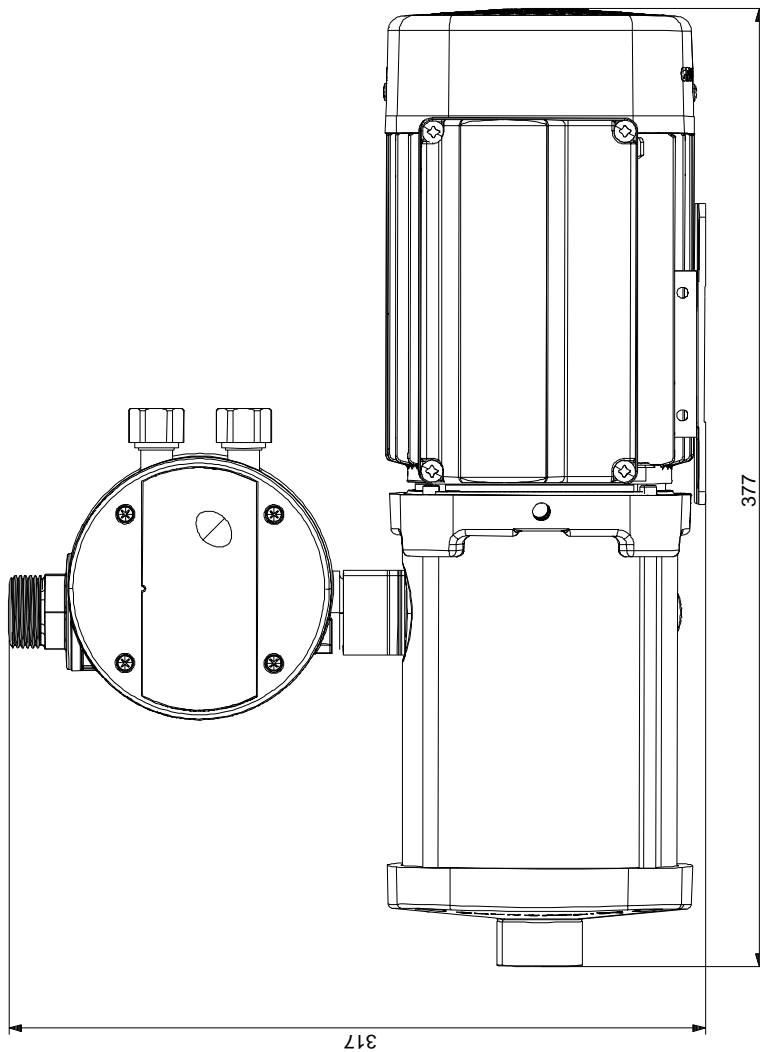
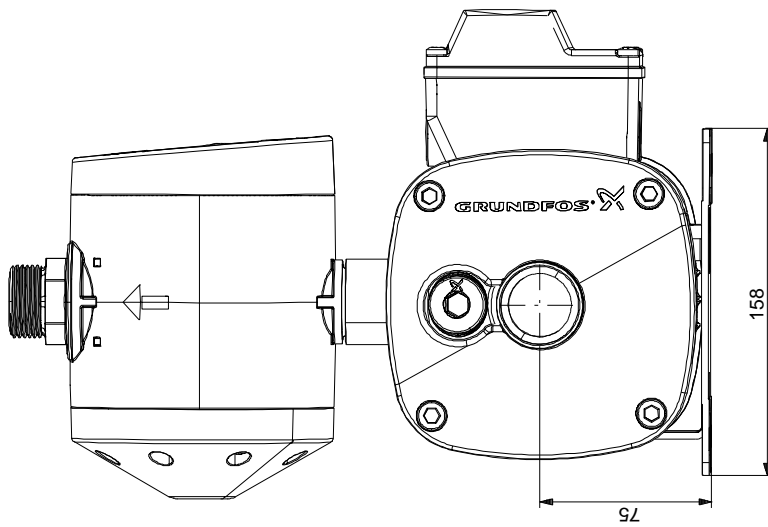
- Australian plug: IEC type I, AS/NZS3112, 1.5 m
- Schuko plug: IEC Type E&F, CEE7/7, 1.5 m
- US plug: IEC type B, NEMA 5-15P, 1.5 m
- NO PLUG, 1.5 m

# On request CMB-SP 1-27 I-C-A-C-A-A 50 Hz

CMB-SP 1-27 0.3 kW 1\*230 V, 50 Hz

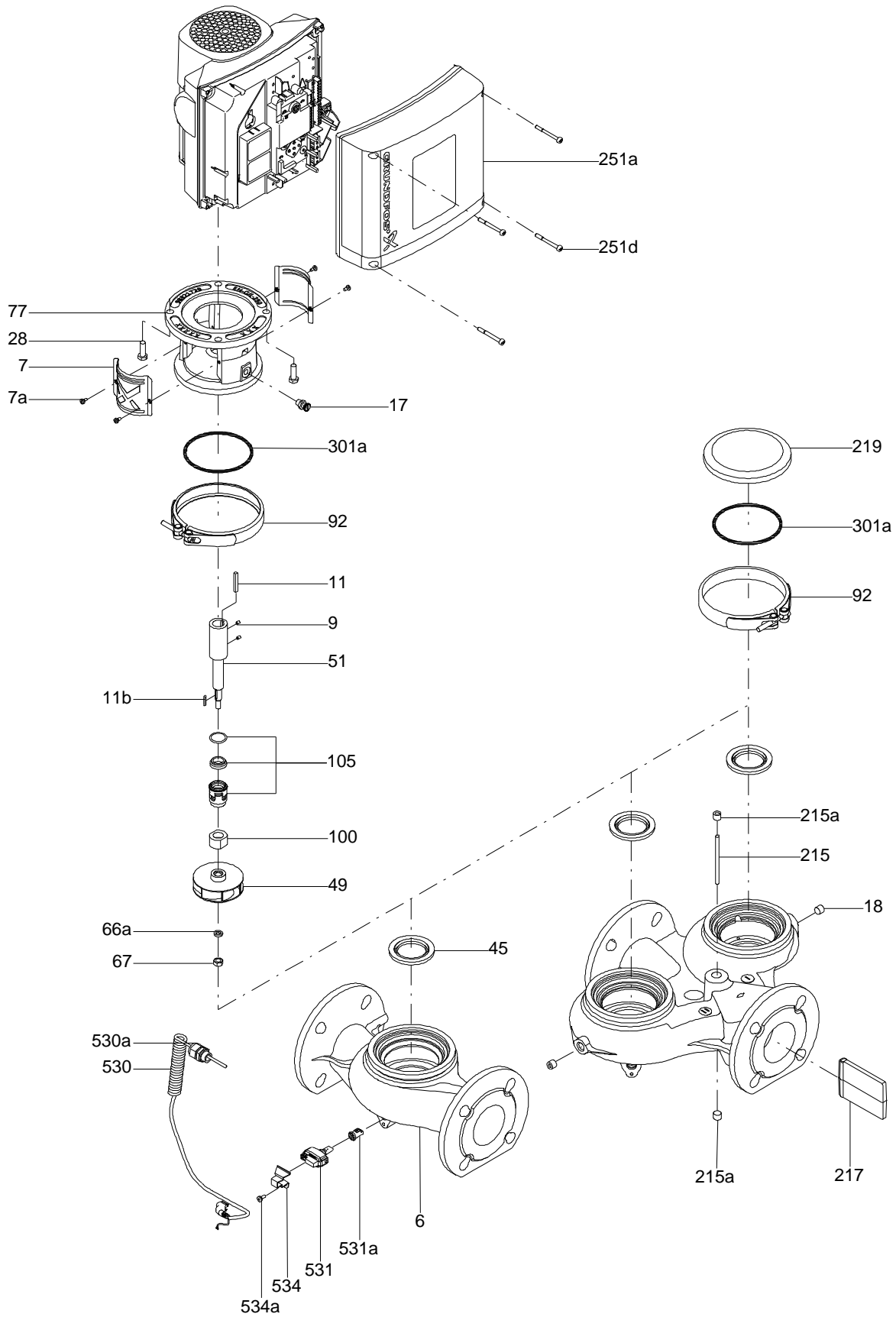


**On request CMB-SP 1-27 I-C-A-C-A-A 50 Hz**

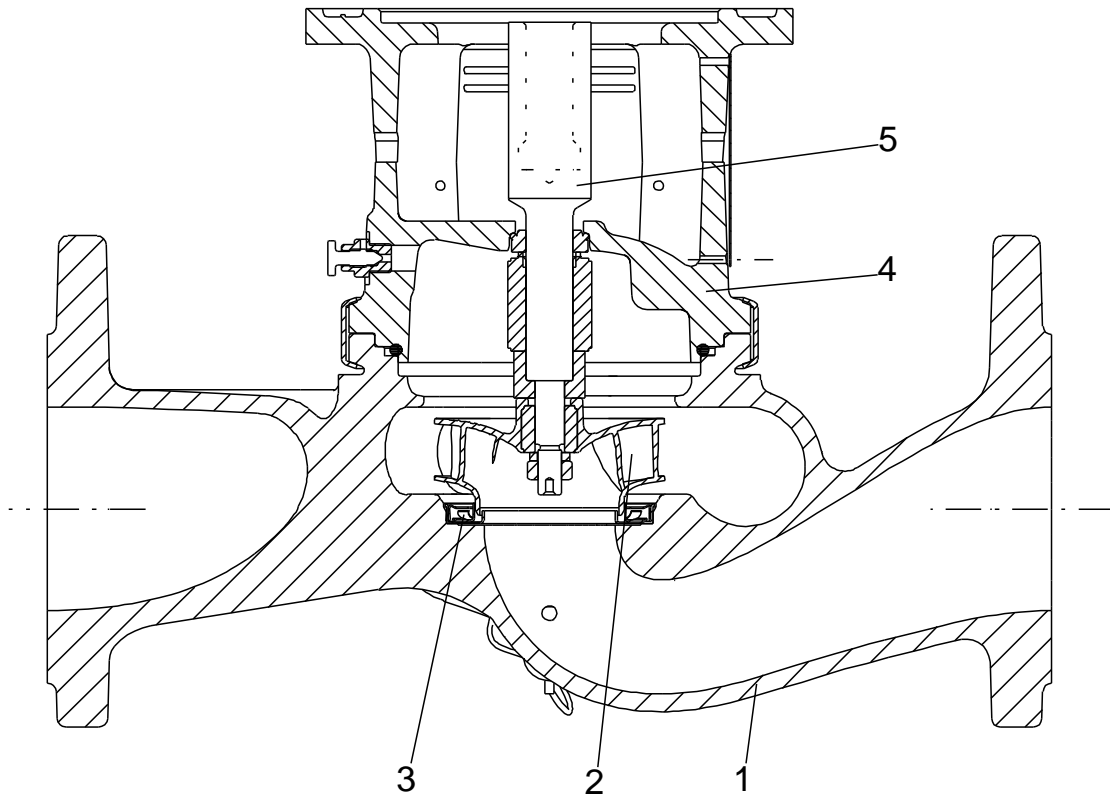


Note! All units are in [mm] unless others are stated.  
Disclaimer: This simplified dimensional drawing does not show all details.

**Exploded view**

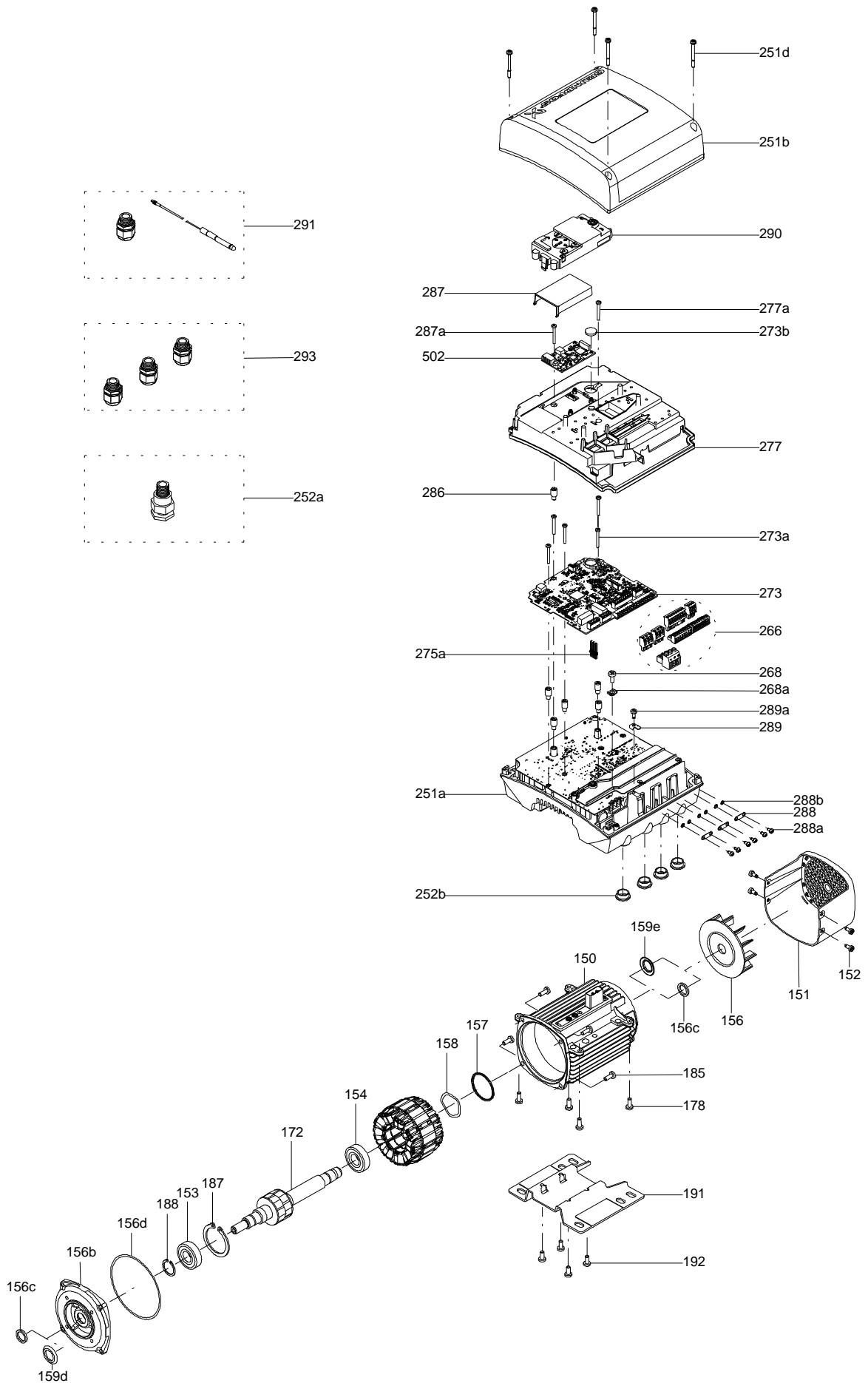


Sectional drawing (TM058200 for TPE2,TPE3)



TM058200

Exploded view ( TM057026 for MGE model H/I )



**Parts list CMB-SP 1-27, Product No. On request**  
**Valid from 3.11.2010 (1044)**

Pos	Description	Annotation	Données de classification	Référence	Quantité	Unité
	Cable tie				1	pcs
37b	O-ring				1	pcs
72	Nameplate				1	pcs
168	Cable gland				1	pcs
181	Cable w/plug				1	pcs
181a	Motor cable				1	pcs